

DIN 910

Tappo testa esagonale con bordino e filetto cilindrico

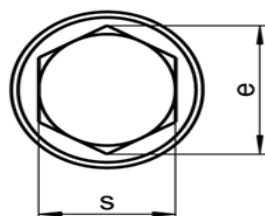
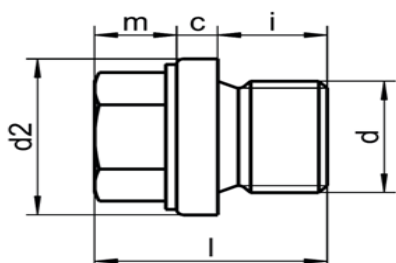
DIN 910

Hexagon head screw plugs with collar – Cylindrical thread

Disponibile/Available

A2

A4



Dimensioni: Tipo Standard
Dimensions: Standard Type

d2	14	18	22	26	32	39	44
l ≈	17	21	21	26	30	32	32
s	10	13	16	18	24	27	27
e	10,89	14,20	17,59	19,85	26,17	29,56	29,56
Tolerance	h14				h15		
m	6	6	6	8	10	11	11
c	3	3	3	4	4	5	5
i	8	12	12	14	16	16	16
d	G 1/8"	G 1/4"	G 3/8"	G 1/2"	G 3/4"	G 1"	G 1 1/8"

Filetto gas secondo DIN EN ISO 228-1
Classe di tolleranza A
Pipe thread as in DIN EN ISO 228-1
tolerance class A

Esagono secondo DIN EN ISO 272
DIN EN ISO 272 HEXAGON

last edit 01/12/2022

DRAWING N. 1040