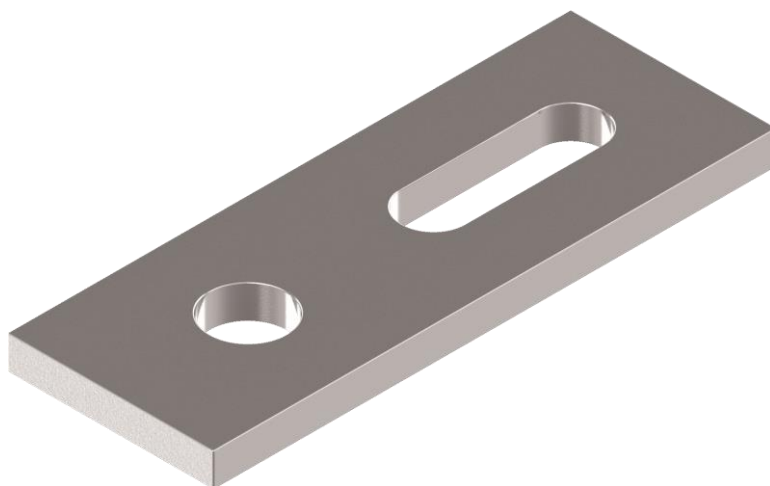


# ADAPTER PLATE FOR HANGER BOLTS



DATA SHEET  
ART. 9543 / ART. 9544

# ART. 9543 / ART. 9544

## TECHNICAL SPECIFICATIONS

Adapter plates for hanger bolts are used for fastening and aligning aluminium profiles on roof structures in conjunction with a hanger bolt and hexagonal flange nuts. The slotted hole guarantees a precise locking of the profiles and despite the use of high-quality materials, the adapter plate is an extremely cost-effective

solution.

<b>Material</b>	Stainless steel
<b>Quality</b>	A2
<b>Surface</b>	Blank

## YOUR ADVANTAGES



COST EFFICIENT



FAST TO WORK WITH



ADAPTIVE ALIGNMENT

› Due to a practical slotted hole

## APPLICATIONS



CONNECTION OF 9664 SOLAR RAILS AND 9216/9215 DOWEL SCREWS



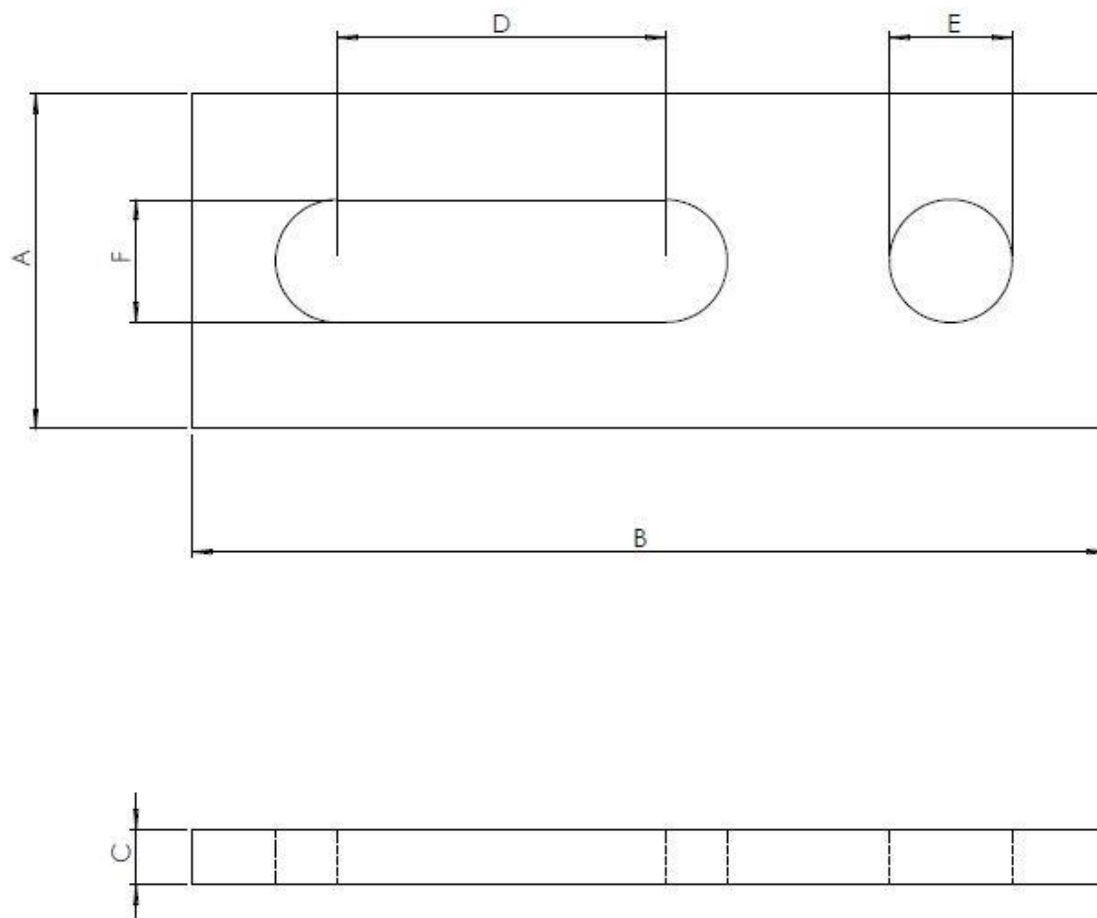
PHOTOVOLTAIC PLANTS FLAT ROOF



PHOTOVOLTAIC PLANTS PITCHED ROOF

WE'D BE PLEASED TO ADVISE WITH YOUR APPLICATION.

# DIMENSIONS (MM)



Article number	A	B	C	D	E	F
95438230502	30	82	5	29,5	11	11
95448203002	30	82	5	29,5	13	11

WE'D BE PLEASED TO ADVISE WITH YOUR APLICATION.