



YOUR NEEDS. OUR MISSION.

**INOXmARE®**

# ABOUT US

With more than 45 years experience, we distribute stainless steel connection elements, marine hardware, fittings and fixing systems for photovoltaic installations all over the world.

All our products, except for the profiles and clamps of the Solar line (Aluminium) are in stainless steel. We're always looking for new, products, services and innovative tools which allows us to satisfy all customers needs.



# PRODUCTS

## 02



Screws, nuts, washers, retaining rings, threaded inserts, parallel keys, blind rivets, rivet nuts, pins and split pins, wedge anchors.

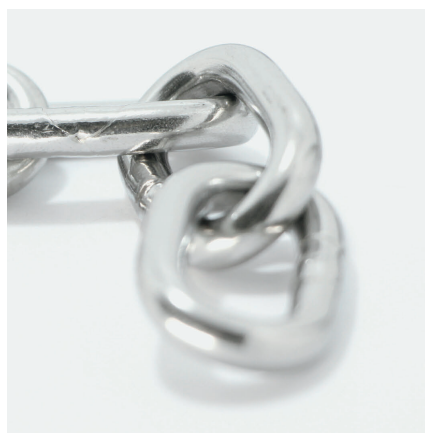
### FASTENERS

---

Threaded fittings, hose clamps, pipe clamps, ball valve.

### FITTINGS

---



Wire ropes, boat handrails, bimini fittings, anchoring and docking, hinges, latches, carabiners, D-shackles, swivels, boat hook brackets, pulley for blocks, rings, eyebolts and thru-hulls.

### MARINE HARDWARE

---

Hook, supports, clamps, mounting rails, connectors.

### SOLAR

---





03

Placed in Bologna, a strategic point of the Italian peninsula. Our warehouse allows us to rapidly ship the goods all over Italy and abroad.

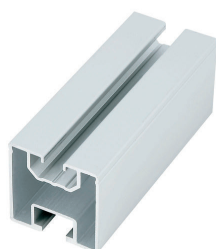
Furthermore, the warehouse is also provided with the best equipment which allow a logistics optimization.

- ✓ Area: 20.000 m<sup>2</sup>
- ✓ 50 warehouse workers
- ✓ Over 500 dispatched orders a day
- ✓ Order fulfillment within 12 hours
- ✓ 30.000 stock pallets.

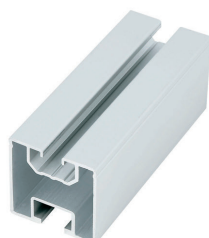
**WAREHOUSE**

# SOLAR —

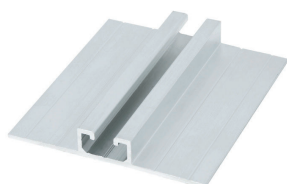
- ✓ RAILS SYSTEMS
- ✓ MODULE CLAMPS
- ✓ ROOF CONNECTIONS
- ✓ SCREWS AND ACCESSORIES

**ART. 9664-W1**

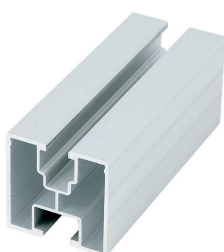
Solar mounting rail for sliding block M 8, section mm. 40x40, Aluminum.

**ART. 9664-W1-UL**

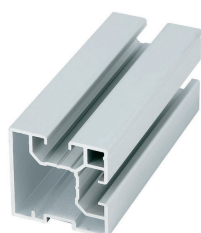
Solar mounting rail for sliding block M 8, section mm. 40x40, Aluminum ULTRA LIGHT.

**ART. 9664-W31**

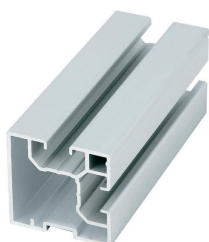
Solar mounting rail for trapezoidal sheet roofs, Aluminum.

**ART. 9664-W3**

Solar mounting rail for square or exagonal nuts M 8 , section mm. 40x40, Aluminum.

**ART. 9664-W15**

Solar mounting rail for sliding block M 8, lateral mounting, section mm. 40x40, Aluminum.

**ART. 9664-W15-UL**

Solar mounting rail for sliding block M 8, lateral mounting, section mm. 40x40, Aluminum, ULTRA LIGHT.

**ART. 9664-W2**

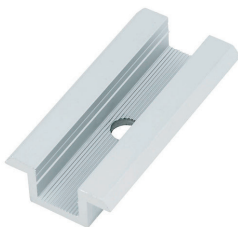
Solar mounting rail for sliding block M 8, section mm. 80x40, Aluminum.

**ART. 9742-W4**



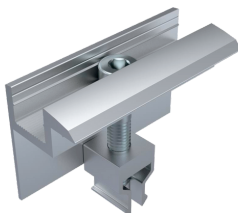
End clamps for frame modules, Aluminum.

**ART. 9745-W13**



Middle clamps for frame modules, Aluminum.

**ART. 9742-WCLIPE**



Pre-assembled with screw and WCLIP.

**ART. 9745-WCLIPM**



Pre-assembled with screw and WCLIP.

**ART. 9742-GM L80/6-9**



End clamps for laminate modules, Aluminum and EPDM.

**ART. 9745 - GM L80/6-9**



Middle clamps for laminate modules, Aluminum and EPDM.

**ART. 9211**



Dowel screw with hexagon and metric-and wood thread.

**ART. 9215**



Dowel screw with hexagon, 1 EPDM washer, 3 din 934 nuts, 3 din 125 washers.

**ART. 9216**



Dowel screw with hexagon, 1 EPDM washer and 3 flange nuts.

**ART. 9543-2-82\*30\*5**



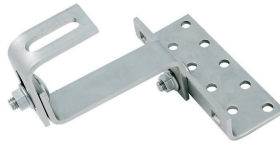
Adapter plate for dowel screws M 10 and M 10 screws Oblong hole. AISI 304 / A2

**ART. 9544-2-82\*30\*5**



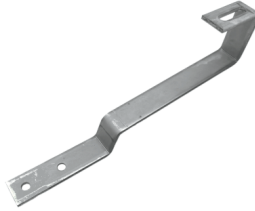
Adapter plate for dowel screws M 12 and M 10 screws Oblong hole. AISI 304 / A2

**ART. 9525**



Solar adjustable roof hook.  
AISI 304 / A2

**ART. 9527**

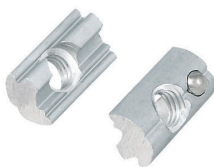


Lowered hook for fixing solar  
mounting rails.  
AISI 304 / A2

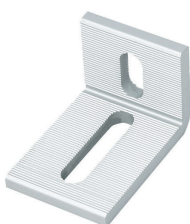
**ART. 9530**



Hook for pantiles roof.  
3-Way adjustable.

**ART. 9431**

Sliding block M 8, Aluminum  
body and AISI 304 / A2  
sphere.

**ART. 9701-W14**

Solar L Bracket, Aluminum.

**ART. 9751-W12**

Solar mounting rail connector,  
Aluminum.

**ART. 9751-W18**

Slide-in Solar mounting rail  
connector, Aluminum.

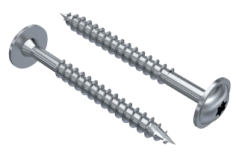
**ART. 9557**

Solar mounting rail connector  
with four hole.  
AISI 304 / A2

**ART. 9664 - 10X25**

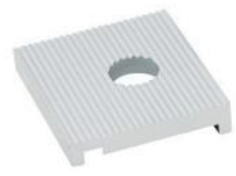
Alternative screws to DIN 933  
Aisi 304/A2

**ART. 9809**



Pan washer head timber screws with cutting point.  
Aisi 304/A2

**ART. 9785 - W26**



Mounting plates for solar triangle, Aluminum.

**ART. 9664-KAPPE40**



Caps for solar mounting rails, ABS.

**ART. 9666**



EPDM Sealing tape, self-adhesive.

## GET IN TOUCH

Via Pomposa 51/i  
47924 - Rimini (ITALY)



+39 0541.794444



info@inoxmare.it



www.inoxmare.com



## CONTATTI

Via Pomposa 51/i  
47924 - Rimini (ITALIA)



+39 0541.794444



info@inoxmare.it



www.inoxmare.com

