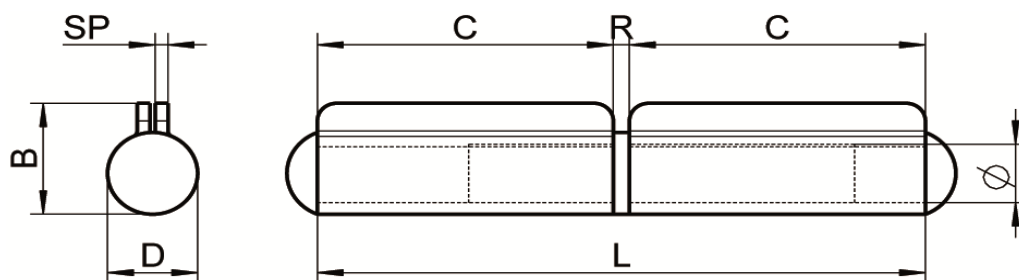





ART. 8132

Cerniere a saldare perno fisso, aisi 304 / A2

Weld-on hinges fixed pin, aisi 304 / A2



Codice Articolo Item Number	L (mm)	B (mm)	C (mm)	R (mm)	D (mm)	SP (mm)	Ø (mm)	 Box	 Master carton	 Pallet
81320600004	60	15	27	2	12	2	8	10	400	16000
81320800004	77	15	37	2	12	2	8	10	200	8000
81321000004	96	18	46	2.5	14,5	2	10	10	150	6000
81321200004	120	21	55	2.5	16,5	2	10	10	100	4000
81321400004	132	21	65	2,5	16,5	2,5	11	10	100	4000



Attenzione!!! Le caratteristiche tecniche sopra riportate, sono puramente indicative e possono subire variazioni da lotto a lotto, a seconda della produzione.
 Pay attention!! The dimensions shown in the data sheets are subject to minimal variations (different production line batch).